

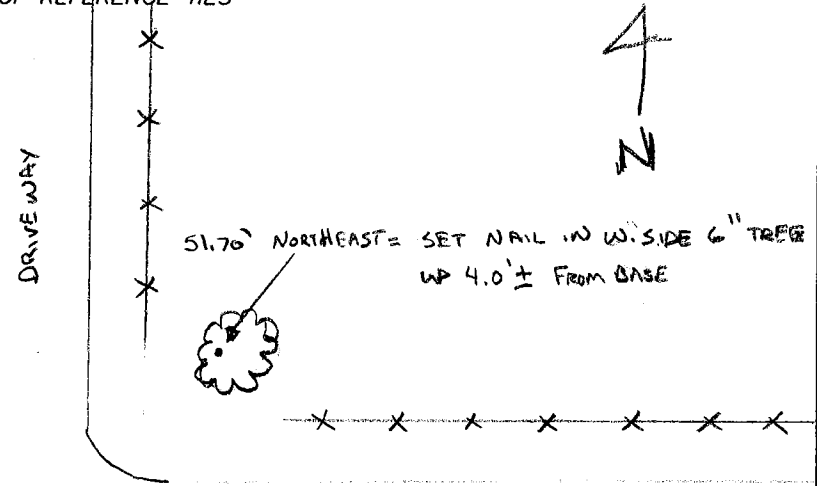
# CERTIFICATE OF LOCATION OF GOVERNMENT CORNER

NORTH QUARTER Corner of Section 8, Township 107 N, Range 43 W, 5<sup>th</sup> P.M.  
 STATE OF MINNESOTA, County of MURRAY

At the corner location shown on the sketch:

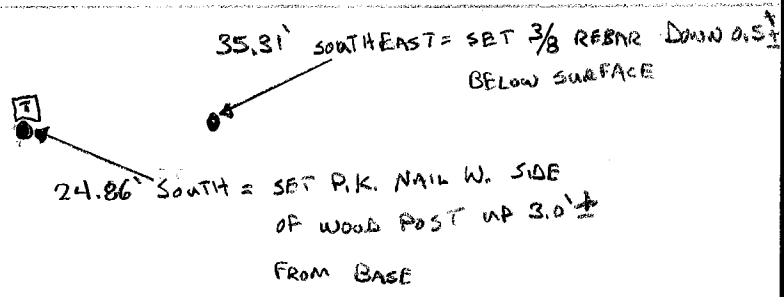
- On 6/25/07 found a STONE DOWN 0.4' BELOW SURFACE  
DATE
- left monument as found,     
  lowered monument,     
  removed monument (explain)
- On \_\_\_\_\_ placed a \_\_\_\_\_  
DATE

SKETCH OF REFERENCE TIES



171<sup>TH</sup> ST GRAVEL

FIELD ROAD



Statement of evidence relative to this corner location is on back of page.

I hereby certify that this document and the data contained herein was prepared by me or under my direct supervision.

*[Signature]*  
SIGNATURE

Registration No. 40853

- Land Surveyor,     
  Professional Engineer  
 County Surveyor,     
  County Engineer

OFFICE OF THE COUNTY RECORDER  
 County of \_\_\_\_\_

I hereby certify that this document was filed in the Co. Recorders office at \_\_\_\_\_ M. on the \_\_\_\_\_ day of \_\_\_\_\_ A.D., 20\_\_\_\_

County Recorder \_\_\_\_\_  
 By \_\_\_\_\_, Deputy  
 DOCUMENT NO. \_\_\_\_\_